

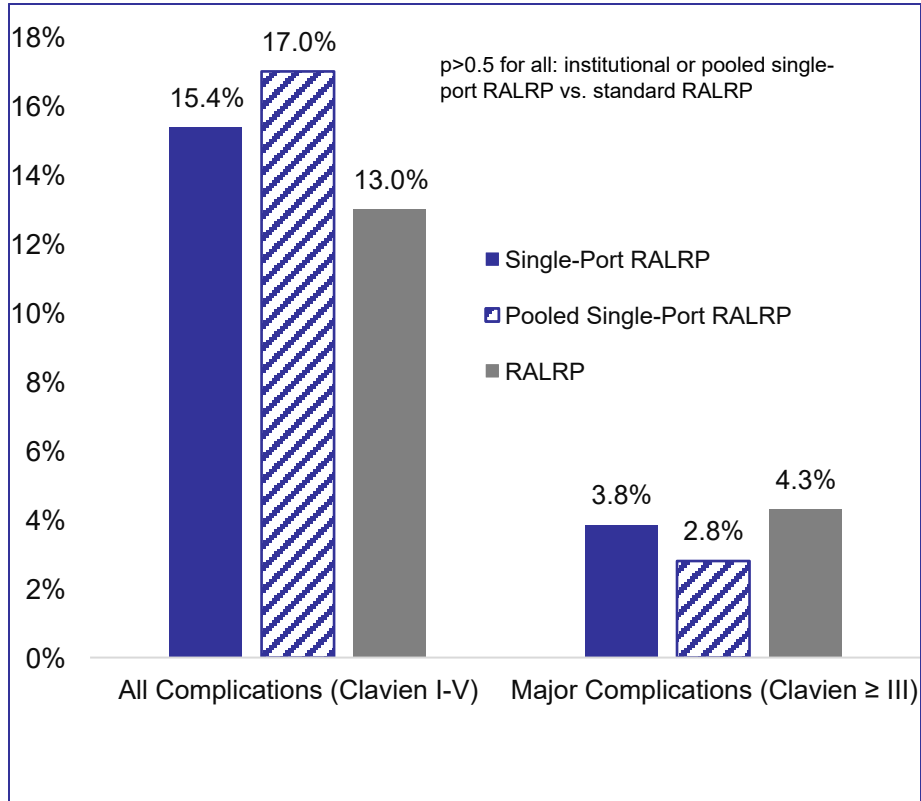


JOHNS HOPKINS
M E D I C I N E

MP04-10: Comparison of Outcomes Between Single-Port and Standard Robot-Assisted Radical Prostatectomy: An Analysis of Early Experiences at a High-Volume Center and the Pooled World Experience

Mitchell M. Huang, Hiten D. Patel, Zhuo T. Su, Julia J. Wainger, Misop Han, Phillip M. Pierorazio, Mohamad E. Allaf

May 3, 2020



Mean (SD) or N (%)	Pooled SP-RALRP (n = 208)	Standard RALRP (n = 376)
Age (years)	62.7 (7.4)	61.3 (7.2)
PSA (ng/mL)	9.6 (7.8)	8.2 (8.8)*
Operative Time	203.2 (48.9)	186.5 (46.9)
Estimated Blood Loss	173.6 (152.0)	181.9 (139.9)
PLND	151 (72.6)	312.0 (83.0)
LN Removed	9.6 (6.8)	11.7 (8.4)
Complications (Any)	27 (13.0)	65 (17.3)
Complications (Major, Clavien ≥III)	9 (4.3)	14 (3.7)
Positive Surgical Margins	65 (31.3)	92 (24.5)

Conclusions

- At a high-volume center, early experiences with SP-RALRP shows outcomes compared to standard RALRP.
- The current pooled world experience with SP-RALRP demonstrates similar outcomes to standard RALRP.
- Major differences: PLND and # of nodes removed.
- SP-RALRP should continue to get wider acceptance.
- Future avenues: cost-equivalence and patient-reported outcomes