

# Predictors of early re-intervention after ureteral Tumorstent insertion for obstructive uropathy



**MP04-12**

**A. Gu, L. Oyo, C. Poyet, T. Hermanns, D. Schmid, T. Sulser, D. Eberli, E.X. Keller**

Department of Urology, University Hospital Zurich, Zurich, Switzerland



**Universität  
Zürich<sup>UZH</sup>**

**USZ** **Universitäts  
Spital Zürich**

# Conflicts of interest



# Introduction

## Ureteral Tumorstents:

- Robust
- Maximal dwell time: 6 months



## Aim:

- Predictors of early re-intervention after first-time Tumorstent insertion.

# Material and Methods

## Inclusion:

- First time insertion
- Tumorstent (Bard® angiomed UROSOFT)
- Patients between 2010 – 2018

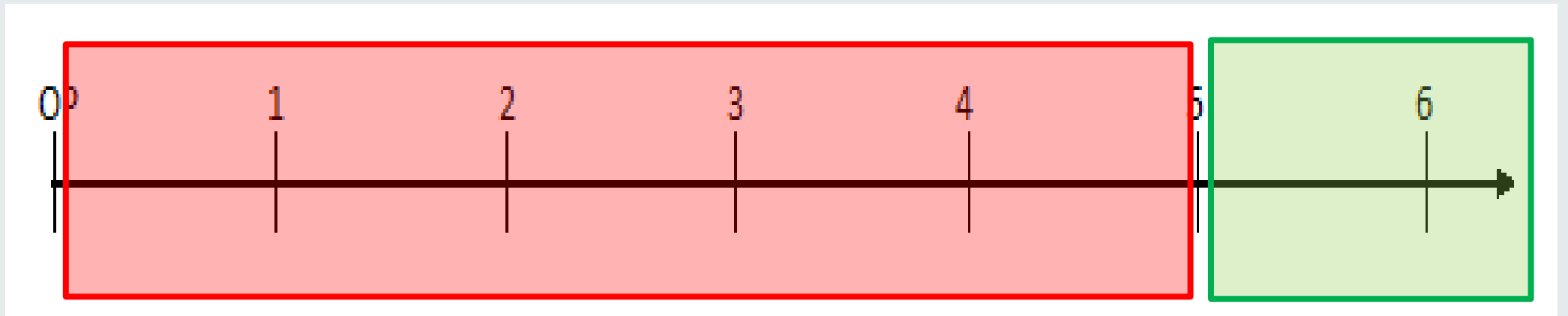
## Exclusion:

- Temporary dwell time

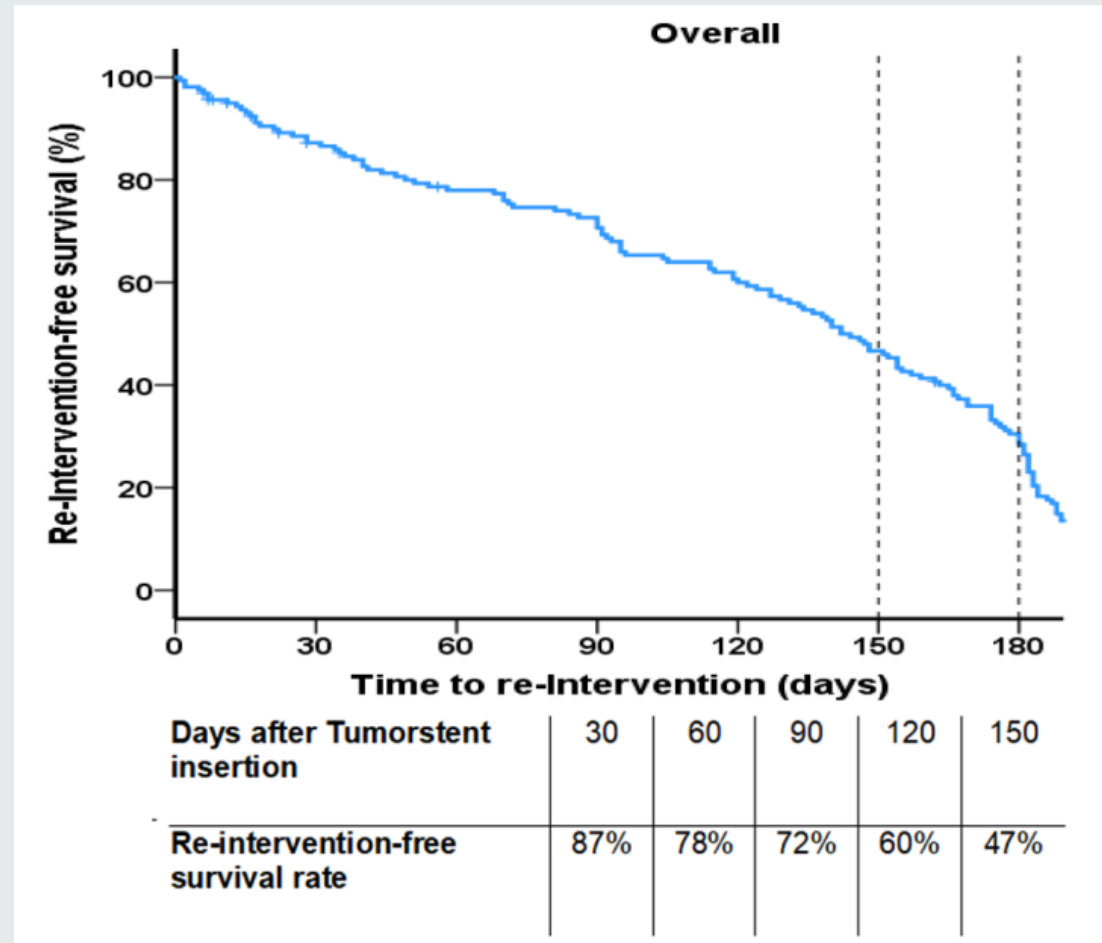
# Material and Methods

## Primary endpoint:

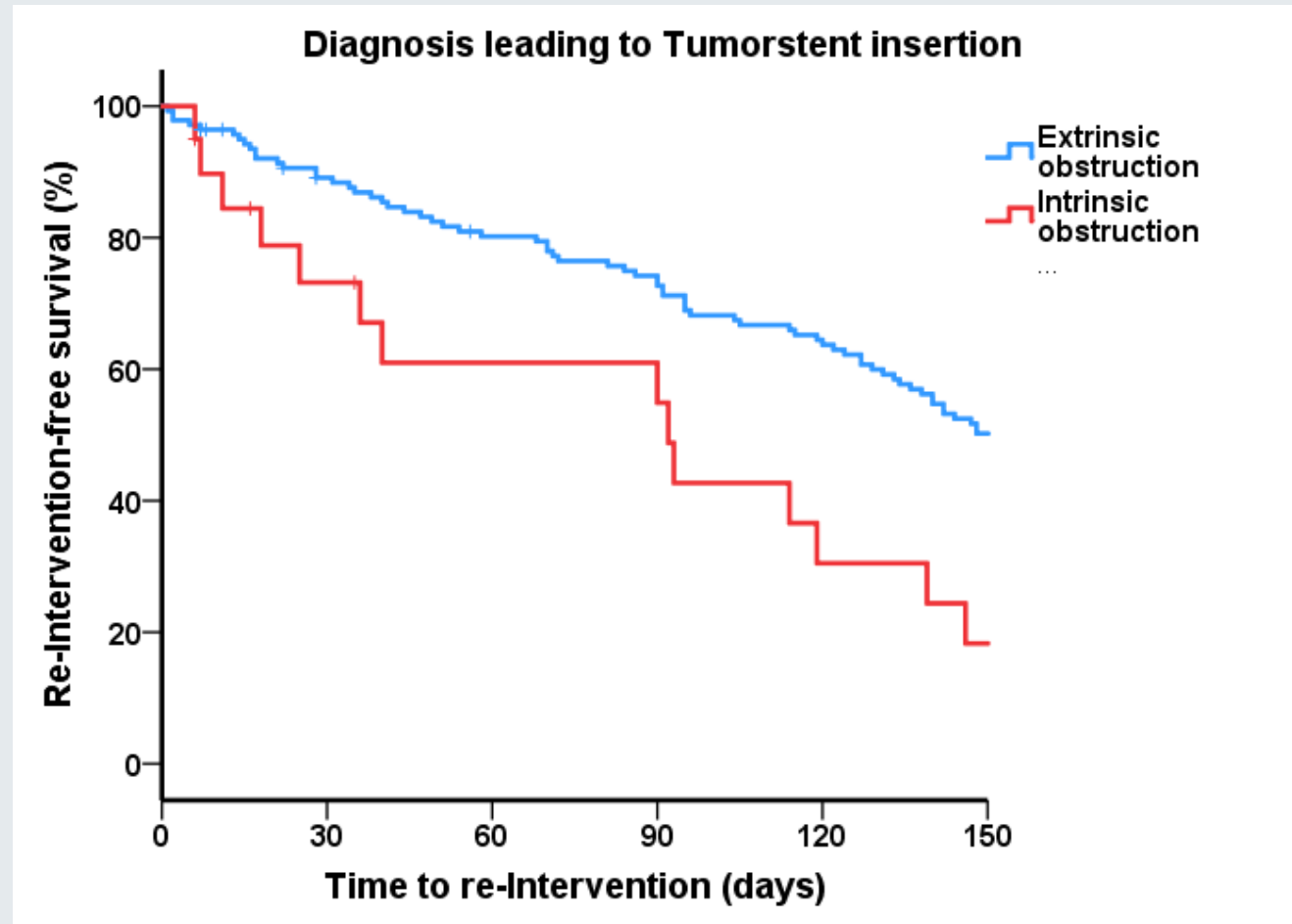
- Time to early re-intervention



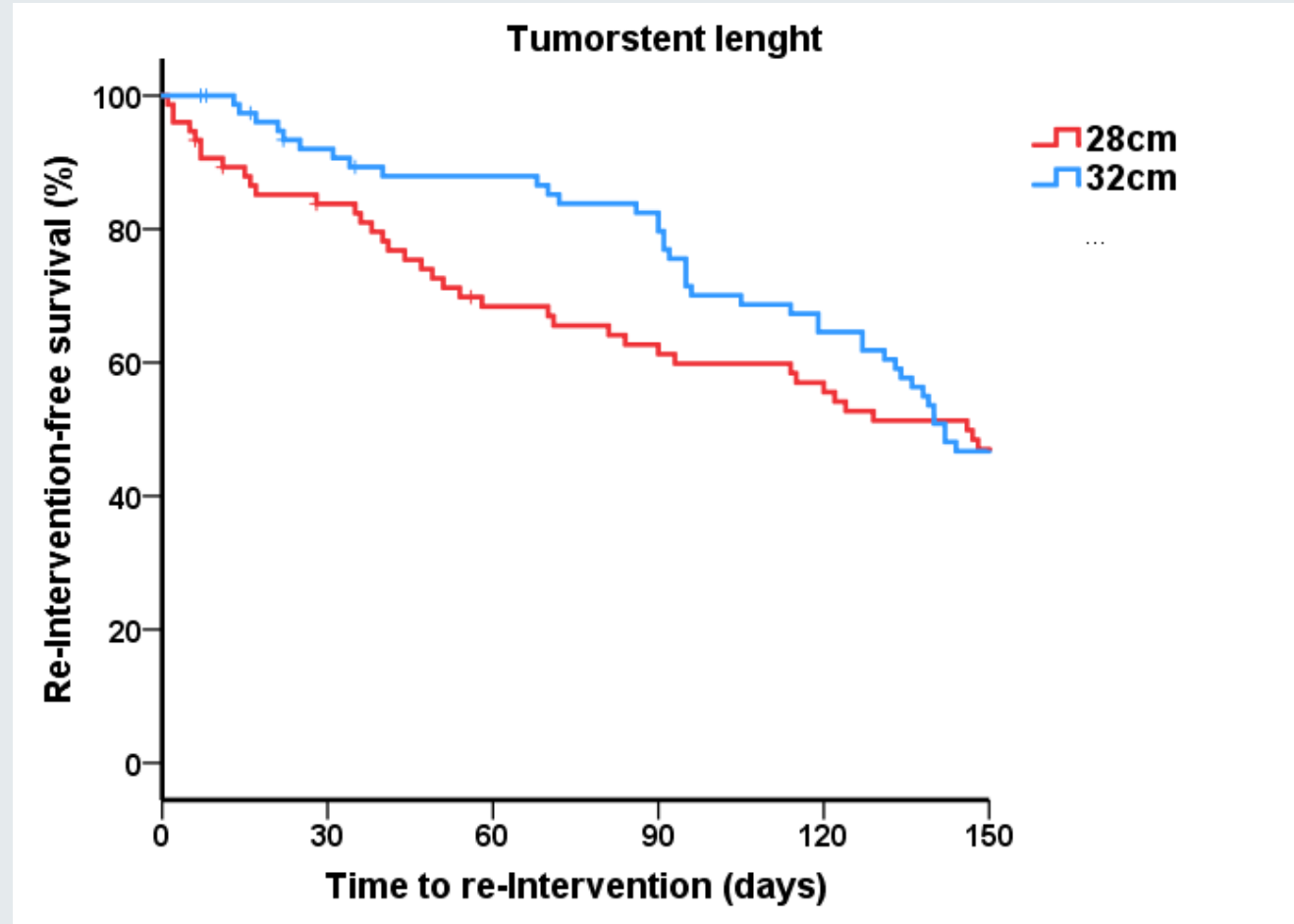
# Results



# Results

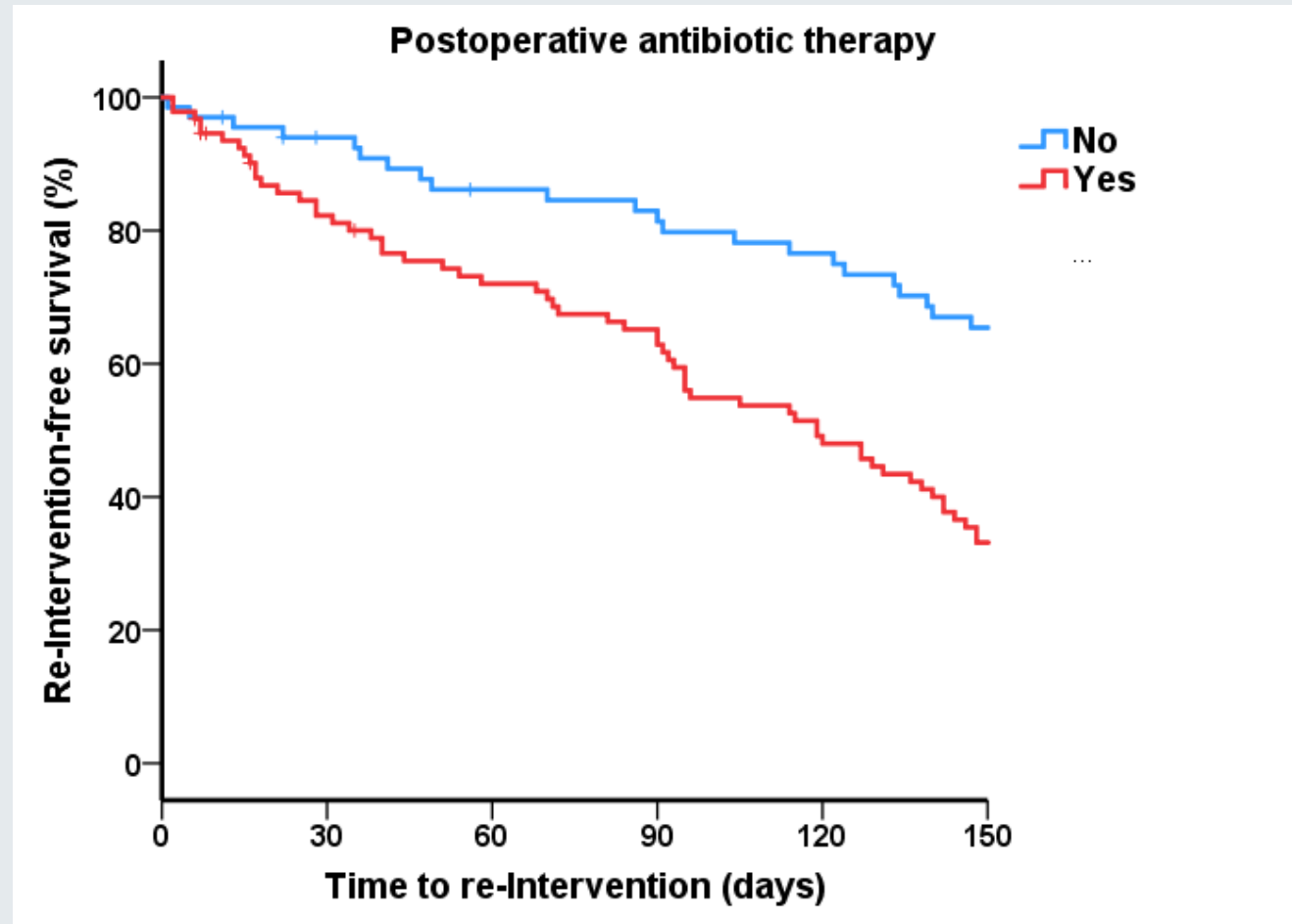


# Results





# Results



# Results

**Table 2: Cox regression analysis for predictors of early re-intervention after Tumorstent insertion\***

Variable	<i>Univariable</i>		<i>Multivariable**</i>	
	HR (95% CI)	<i>p</i>	HR (95% CI)	<i>p</i>
<b>Diagnosis at operation</b>				
Extrinsic obstruction	1.0 (Ref.)		1.0 (Ref.)	
Intrinsic obstruction	2.21 (1.18 – 4.12)	<b>0.013</b>	2.31 (1.16 – 4.62)	<b>0.017</b>
<b>Tumorstent length</b>				
32 cm	1.0 (Ref.)	0.207	1.0 (Ref.)	
28 cm	1.37 (0.84 – 2.22)		1.65 (1.01 – 2.71)	<b>0.048</b>
<b>Postoperative antibiotic therapy</b>				
No	1.0 (Ref.)		1.0 (Ref.)	
Yes	2.39 (1.39 – 4.00)	<b>0.001</b>	2.64 (1.42 – 4.89)	<b>0.002</b>
<b>Weight (continuous, per 10kg)</b>	1.15 (0.99 – 1.32)	0.051	1.17 (1.01 – 1.36)	<b>0.036</b>

\* Only variables retained in a conditional backward multivariable analysis with an entry and removal level of 0.05 are shown.

HR = hazard ratio; 95% CI = 95% confidence interval

# Conclusions

## Early re-intervention

- >50 % patients within 5 months

## Predictors

- Intrinsic compression
- Shorter Tumorstent (28 cm)
- Postoperative antibiotic therapy
- Higher patient's weight





Thank you



@exkeller



EtienneXavier.Keller@USZ.ch