

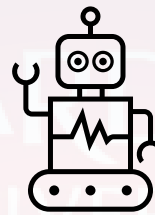


**MP19-05**

# **Assessment of Patient Satisfaction after 12-hour Stay Robotic Prostatectomy**

Saunders R, Jeyanthi M, Wilson J, Ravi J, Tozer J, Colmsee M, Jefferies M, Coomer W, Cox A  
Royal Gwent Hospital, Newport, United Kingdom

# Background



Standard discharge time for robotic prostatectomy ~24hrs

RALP ERAS  
programme

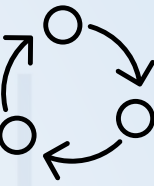
Day of Surgery (DOS) discharge ~12 hrs

# Objectives



- **Primary Objective:** Assess patient satisfaction and acceptability of DOS discharge
- **Secondary Objective:** Determine the surgical feasibility of DOS-discharge

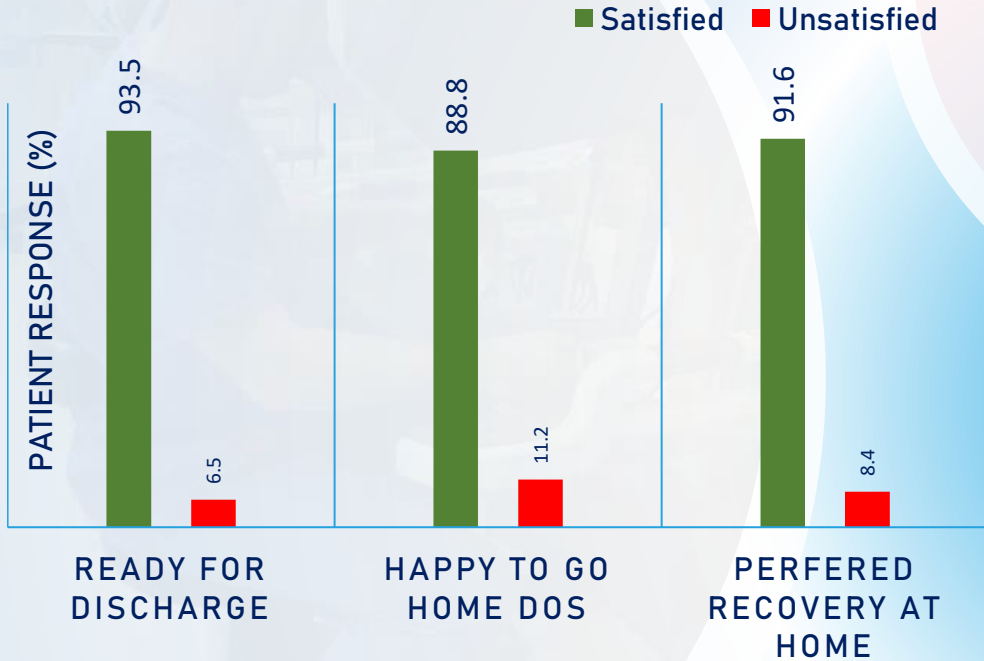
# Methods



Acceptability Parameter	Feasibility Parameter
<b>Pre-operative Education</b> <ul style="list-style-type: none"><li>• Usefulness of pre-operative information</li><li>• Helpfulness of Pre-assessment Clinic</li></ul>	<b>Pre-operative Cancer Status</b> <ul style="list-style-type: none"><li>• PSA level</li><li>• Gleason Grade</li><li>• Clinical Tumour Stage</li></ul>
<b>Post-operative Well-being</b> <ul style="list-style-type: none"><li>• Pain Score</li><li>• Acceptable level of pain</li><li>• Nausea and Vomiting</li></ul>	<b>Intra-operative</b> <ul style="list-style-type: none"><li>• Console Time</li><li>• Blood Loss</li></ul>
<b>Post-operative Advice</b> <ul style="list-style-type: none"><li>• Oral Feeding and Drinking</li><li>• Mobilisation</li></ul>	<b>Post-operative Oncological Outcome</b> <ul style="list-style-type: none"><li>• Positive Surgical Margin</li><li>• Pathological Tumour Stage</li><li>• 90 day PSA level</li></ul>
<b>Discharge Information</b> <ul style="list-style-type: none"><li>• Wound and Catheter Management</li><li>• Willingness for discharge</li><li>• Preference of recovery location</li><li>• Usefulness of 24-hr follow-up phone call</li></ul>	<b>Post-operative Complication</b> <ul style="list-style-type: none"><li>• 30-day Complication</li><li>• Clavien Dindo Score</li><li>• 90-day Complication and Re-admission</li></ul>
<b>Satisfaction of RALP</b> <ul style="list-style-type: none"><li>• Correlation to initial expectations</li><li>• Recommendation of RALP</li></ul>	

# Results

- 121 patients were DOS-discharge between June 2015-October 2019
- Patient response rate: 88%
- Post-operative side-effects: >90% satisfaction



Feasibility Parameter	Total
Console Time (mins): Median (range)	93 (61-210)
Blood Loss (mL): Mean (range)	150 (20-800)
<b>Pathological Tumour Stage</b>	
pT2	83 (69%)
pT3a	31 (26%)
PT3b	7 (6%)
<b>Surgical Margin</b>	
Positive	19 (16%)
Negative	102 (84%)
<b>90-day Post-operative PSA level</b>	
Negligible (< 0.1ng/mL)	93%
Detectable (≥ 0.1 ng/mL)	7%
<b>Overall Complication Rate 30 day</b>	
Clavien Dindo I	2%
Clavien Dindo II	7%
Clavien Dindo IIIa	2%
Clavien Dindo IIIb	<1%

# Discussion

**HIGH** level of patient satisfaction with **equivalent** surgical feasibility outcomes

- Excellent pre-operative education and preparation
- Modified intra-operative measures

- Pain management with simple analgesia
- Encouragement for early eating/drinking/mobilisation
- 24-hr FU telephone call