

Abstract ID: 20-4994

# (MP27-02) Personal characteristics associated with 30-day recall of self-reported lower urinary tract symptoms

KE Flynn, SA Mansfield, AR Smith, BW Gillespie, CS Bradley, D Cella, ME Helmuth, HH Lai, Z Kirkali, P Talaty, KP Weinfurt, and the LURN Study Group



Funding from the NIDDK through cooperative agreements (grants DK097780, DK097772, DK097779, DK099932, DK100011, DK100017, DK097776, DK099879)

# LURN Recall Study Overview

Concordance between averaged daily reports and recalled reports of LUTS is good overall, but some LUTS have a higher proportion of individuals with recall bias

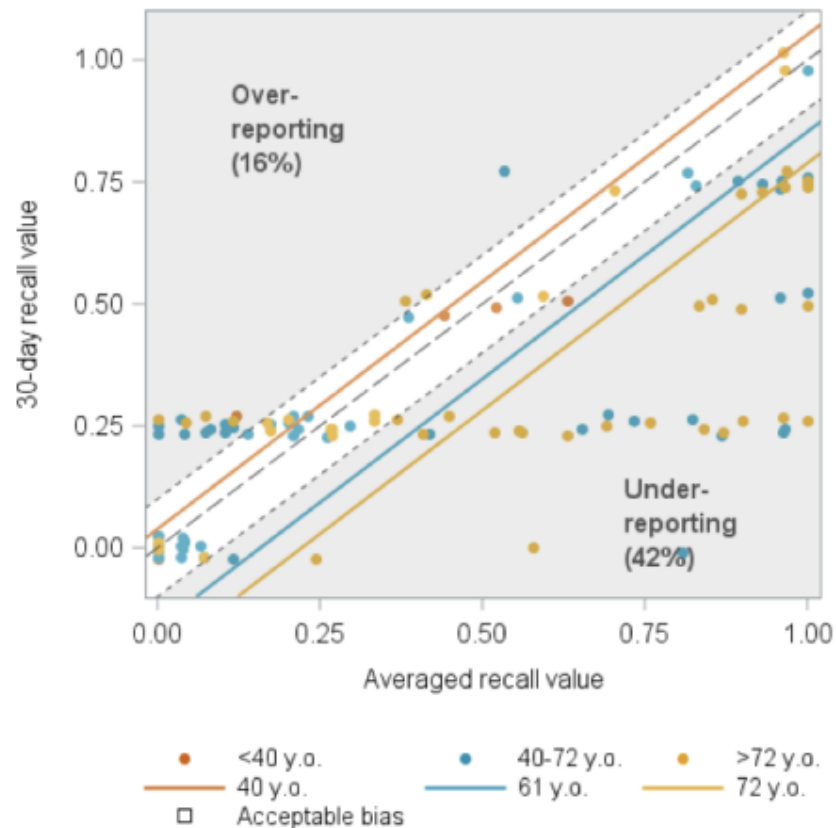
We examined associations between 30-day recall of LUTS and personal characteristics for 18 LURN CASUS items representing 9 LUTS

254 patients recruited from 6 US tertiary care sites

Using general linear regression models for each item, the average of the participant's daily responses was modeled as a function of

- 1) their 30-day recall,
- 2) the personal characteristic (e.g., age, symptom bother), and
- 3) the interaction between 1 and 2, adjusted for sex

# Figure showing relationship between older age and under-reporting urgency incontinence



# Summary of Results

Symptom	Recall bias <sup>1</sup>	Associated characteristic(s)
Urgency incontinence	Underreporting	Older age, Lower anxiety
Stress incontinence	Underreporting	Higher negative affect, Lower anxiety
Other incontinence	—	—
Daytime frequency	—	—
Nocturia	Overreporting	Sex
Urgency incontinence	Overreporting	Lower symptom bother, anxiety, & depression, Higher symptom variability
Slow/weak stream	Overreporting	Lower symptom bother
Incomplete emptying	Overreporting	—
Post-micturition dribble	Overreporting	Lower symptom variability

<sup>1</sup> Systematic over- or under-reporting, where at least 25% of participants had bias of at least 10%