



中山大學
腫瘤防治中心
SUN YAT-SEN UNIVERSITY CANCER CENTER

Adjuvant Intra-arterial Chemotherapy Following Surgery In Treating Patients With Locally Advanced Bladder Cancer: A China, prospective, Multicenter, randomized Phase III Trial

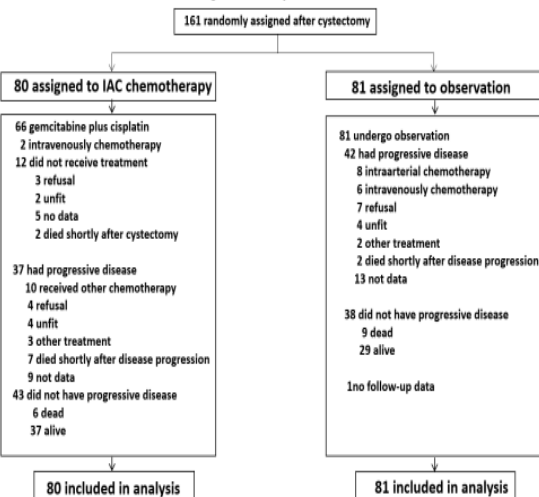
Lijuan Jiang, Fangjian Zhou, Zhuowei Liu

Department of Urology, Sun Yat-sen University Cancer Center, GuangZhou, China;

◆ IAC showed improve DFS and OS for patients with locally advanced bladder cancer

STUDY DESIGN

Figure 1. Study flowchart



RESULTS

Figure 2. Kaplan-Meier survival curves

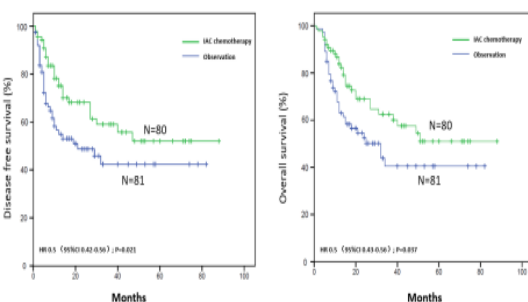


Table 1 : Baseline characteristics

	IAC (n=80)	Observation (n=81)
Age(years)		
≤60	28(35%)	26(32%)
>60	52(65%)	55(68%)
Sex		
Male	71(89%)	72(89%)
Female	9(11%)	9(11%)
WHO performance status		
0	40(50%)	39(48%)
1	39(49%)	41(51%)
2	1(1%)	1(1%)
pT category		
pT1	1(1%)	4(5%)
pT2	9(11%)	11(14%)
pT3	47(59%)	44(54%)
pT4a	22(28%)	22(27%)
pT4b	1(1%)	0
pN category		
pN0	34(43%)	34(42%)
pN1	14(17%)	19(23%)
pN2	18(23%)	22(27%)
pN3	14(17%)	6(8%)
pTN category		
pT1T2N+	10(13%)	15(18%)
pT3T4N-	34(42%)	34(42%)
pT3T4N+	36(45%)	32(40%)
pN by number of dissected nodes		
pN- <15 nodes	11(14%)	15(19%)
pN- ≥15 nodes	24(30%)	19(24%)
pN+ <15 nodes	10(12%)	10(12%)
pN+ ≥15 nodes	35(44%)	36(45%)

Table 2: Haematological adverse events (AE)(n=66)

	Any grade	Grade 1	Grade 2	Grade 3	Grade 4
Leucocytes	43(65%)	15(23%)	22(33%)	6(9%)	0
Neutrophils or granulocytes	17(26%)	17(26%)	16(24%)	12(18%)	4(6%)
Platelets	38(58%)	15(23%)	11(17%)	1(2%)	1(2%)
Haemoglobin	24(36%)	21(32%)	16(24%)	5(8%)	0

Data are number of patients with at least one event (% of patients).

Table 3 :Clinical outcomes during follow-up

	IAC (n=80)	Observation (n=81)
Survival status		
Alive	40(50%)	41(51%)
Dead	40(50%)	39(48%)
Cause of death		
Disease	32(40%)	28(35%)
Other	2(3%)	4(5%)
Unknown	6(7%)	7(9%)
Progression free survival		
Alive without progression	37(46%)	29(36%)
Progressed or died	43(54%)	51(63%)
First progression event		
Distant metastasis	18(22%)	17(21%)
Local or locoregional	19(24%)	25(31%)
Died without progression	6(8%)	9(11%)
Progression at any time during follow-up		
Any local or locoregional recurrence	20(25%)	28(35%)
Any distant progression	22(28%)	22(27%)



Thanks for your attention!