

BRIGHAM HEALTH



BRIGHAM AND
WOMEN'S HOSPITAL

MP79-18: Impact of Metabolic Diseases and Drugs on Prostate
Cancer Patients Receiving Androgen Deprivation Therapy

NAME: JIUN-HUNG GENG, MD

*Title: Research fellow in Surgery
Brigham and Women's Hospital
Harvard Medical School*



HARVARD MEDICAL SCHOOL
TEACHING HOSPITAL

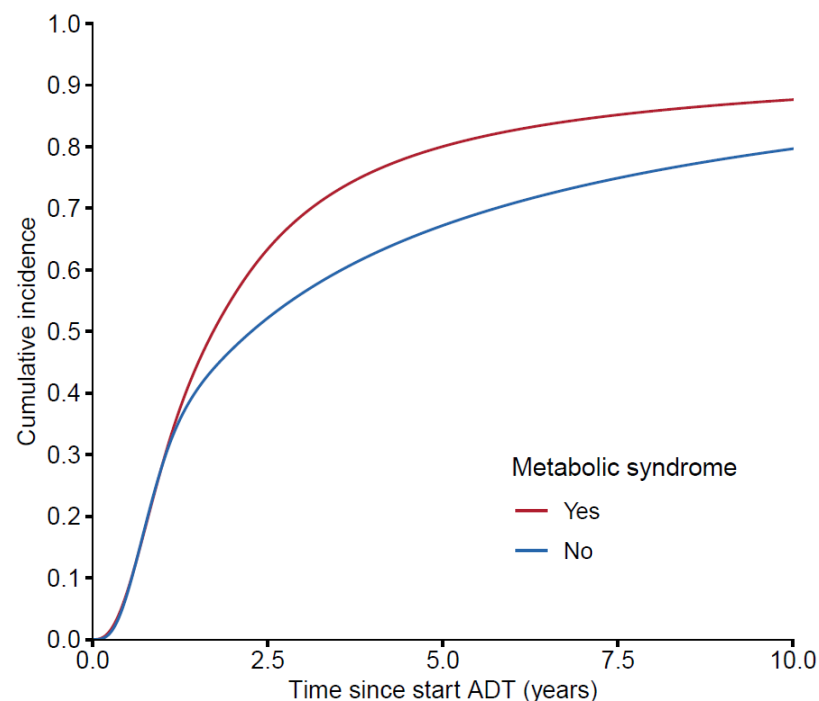
A FOUNDING MEMBER OF

PARTNERS.
HEALTHCARE

Hazard ratio for CRPC by metabolic disease or medication

Standardized cumulative incidence of CRPC (controlling for confounding)

Variable	Label	HR_unadj	HR_adj1	HR_adj2
Smoking (ever)	No	1 (Ref.)	1 (Ref.)	1 (Ref.)
	Yes	1.02 (0.82-1.26)	0.99 (0.79-1.24)	1.05 (0.82-1.33)
Diabetes mellitus	No	1 (Ref.)	1 (Ref.)	1 (Ref.)
	Yes	1.24 (0.90-1.71)	1.27 (0.89-1.82)	1.22 (0.83-1.79)
Hypertension	No	1 (Ref.)	1 (Ref.)	1 (Ref.)
	Yes	1.16 (0.94-1.42)	1.27 (1.01-1.59)	1.27 (1.00-1.61)
Obesity	No	1 (Ref.)	1 (Ref.)	1 (Ref.)
	Yes	1.09 (0.88-1.36)	1.05 (0.83-1.33)	1.04 (0.80-1.34)
Hyperlipidemia	No	1 (Ref.)	1 (Ref.)	1 (Ref.)
	Yes	0.85 (0.69-1.04)	0.85 (0.68-1.06)	0.89 (0.70-1.12)
Metabolic syndrome	No	1 (Ref.)	1 (Ref.)	1 (Ref.)
	Yes	1.44 (1.13-1.83)	1.38 (1.07-1.78)	1.36 (1.04-1.77)
Statins	No	1 (Ref.)	1 (Ref.)	1 (Ref.)
	Yes	0.74 (0.59-0.93)	0.75 (0.58-0.95)	0.79 (0.61-1.02)
Aspirin	No	1 (Ref.)	1 (Ref.)	1 (Ref.)
	Yes	0.79 (0.63-0.99)	0.78 (0.61-1.00)	0.80 (0.61-1.05)
Metformin	No	1 (Ref.)	1 (Ref.)	1 (Ref.)
	Yes	1.05 (0.69-1.60)	1.10 (0.69-1.76)	1.08 (0.66-1.75)



Adjustment 1: age at ADT initiation, year of ADT initiation, and race

Adjustment 2: age at ADT initiation, year of ADT initiation, race, M1, Gleason 7+, PSA at ADT initiation, primary treatment

Hazard ratio for CRPC by combinations of metabolic disease and statins/aspirin/metformin

Variable	Label	HR_ref1	HR_ref2
Metabolic syndrome	No	1 (Ref.)	0.60 (0.41-0.87)
	Yes, without statins	1.67 (1.14-2.43)	1 (Ref.)
	Yes, with statins	1.09 (0.81-1.47)	0.66 (0.45-0.96)
Metabolic syndrome	Only statins	0.44 (0.22-0.88)	0.27 (0.13-0.56)
	No	1 (Ref.)	0.77 (0.55-1.07)
	Yes, without aspirin	1.30 (0.94-1.80)	1 (Ref.)
Metabolic syndrome	Yes, with aspirin	1.19 (0.84-1.70)	0.92 (0.64-1.32)
	Only aspirin	0.61 (0.35-1.07)	0.47 (0.26-0.83)
Metabolic syndrome	No	1 (Ref.)	0.73 (0.55-0.96)
	Yes, without metformin	1.37 (1.04-1.81)	1 (Ref.)
	Yes, with metformin	1.28 (0.76-2.15)	0.93 (0.55-1.57)
Metabolic syndrome	Only metformin	0.99 (0.98-1.01)	0.99 (0.98-1.01)
	No	1 (Ref.)	0.66 (0.42-1.04)
	Yes, without medication	1.51 (0.97-2.38)	1 (Ref.)
Metabolic syndrome	Yes, with medication	1.14 (0.84-1.55)	0.75 (0.48-1.17)
	Only medication	0.62 (0.38-1.02)	0.41 (0.23-0.75)

Adjustment: age at ADT initiation, year of ADT initiation, race, M1, Gleason 7+,
PSA at ADT initiation, primary treatment

Ref1: "No" is the reference group

Ref2: "Yes, without . . ." is the reference group

Standardized cumulative incidence of CRPC (controlling for confounding)

