

PD55-11

BENCHMARKING RADICAL CYSTECTOMY

**ANALYSIS OF THE BRITISH ASSOCIATION
OF UROLOGICAL SURGEONS NATIONAL
DATABASE FOR RADICAL CYSTECTOMY.**

Joseph B John, John Pascoe, Sarah Fowler, Alexandra Colquhoun,
Edward Rowe, Benjamin Challacombe and John S McGrath

On behalf of the BAUS Section of Oncology.

BACKGROUND

- UK surgical outcomes publication - mandated



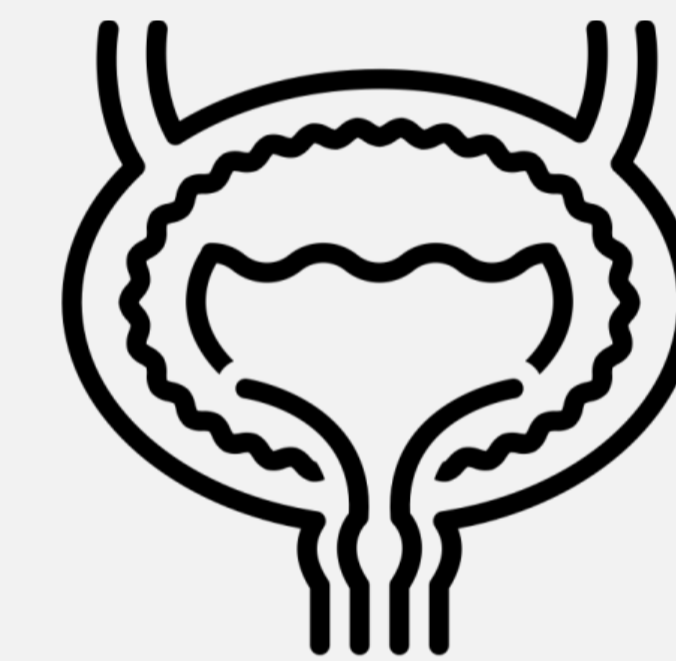
- BAUS complex operations databases



- **Cystectomy**
- Prostatectomy
- Nephrectomy
- PCNL
- Stress urinary incontinence surgery
- Urethroplasty

OBJECTIVES

- To produce:
- Comprehensive RC benchmarking data, providing:
- Transparency for patients
- Representative benchmark for surgeons.



PATIENTS AND METHODS

- BAUS database for radical cystectomy (RC).
- 22 mandated fields and 84 in total.
- Patient, disease, surgical, pathological and outcome.
- Review and amend their data before lockdown and data cleansing.

PATIENTS AND METHODS

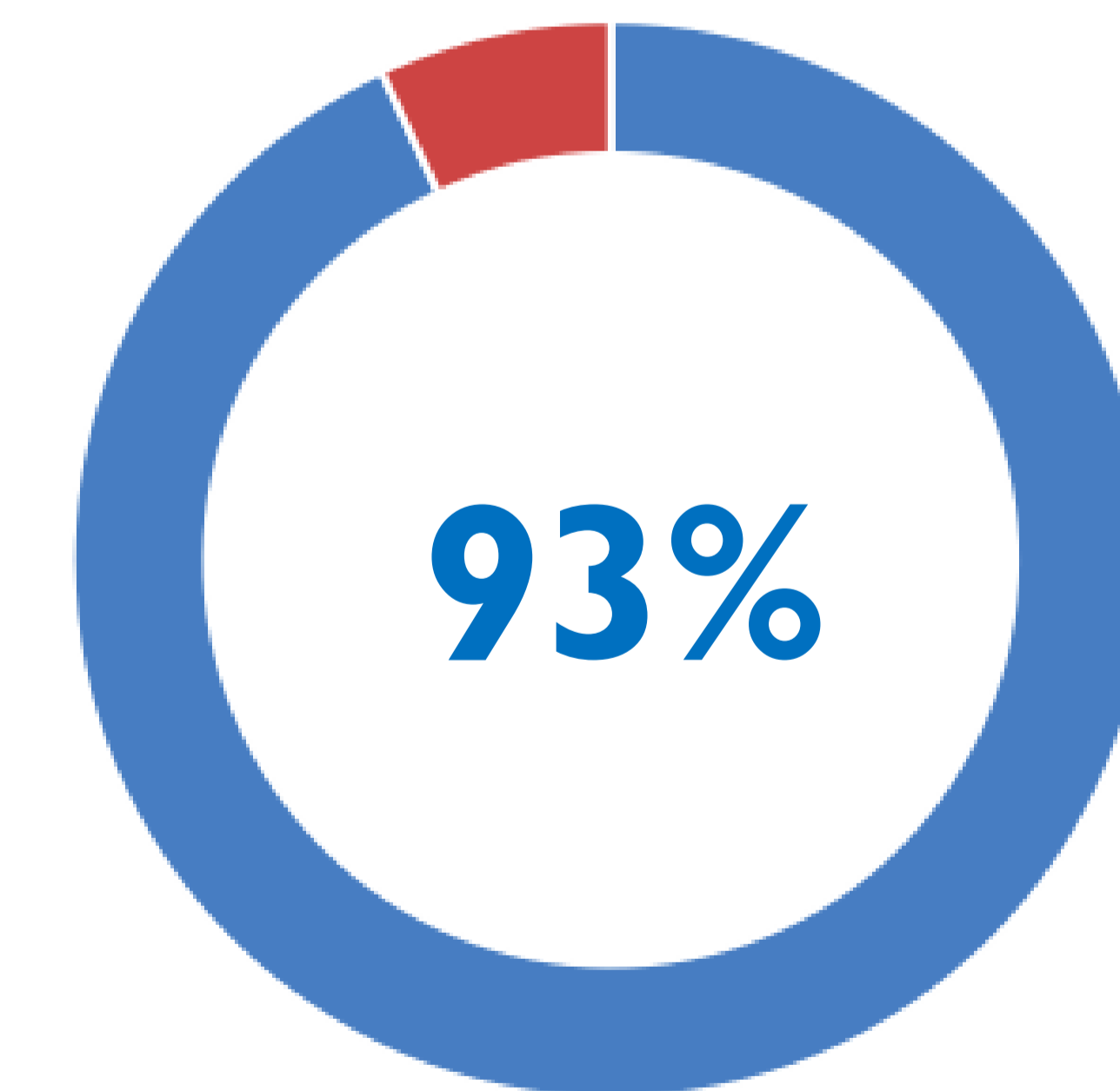
- 5,288 patients undergoing RC
 - 2016-18
 - England
 - National Health Service



NHS

- Dataset completion:
 - Comparison with hospital episode statistics data

RCs recorded in dataset



DATASET COMPLETION

Fig 2a. % completion of data fields

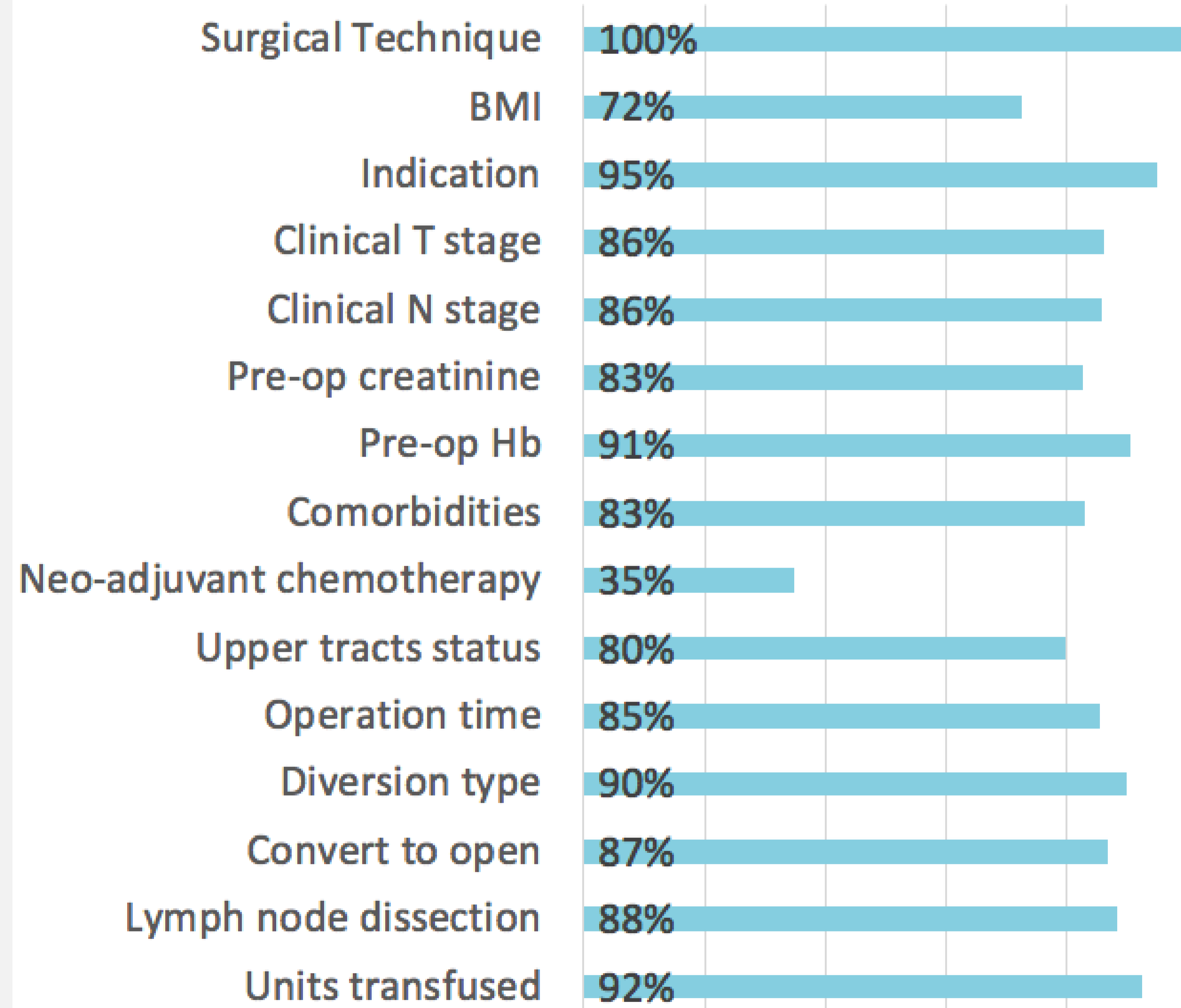
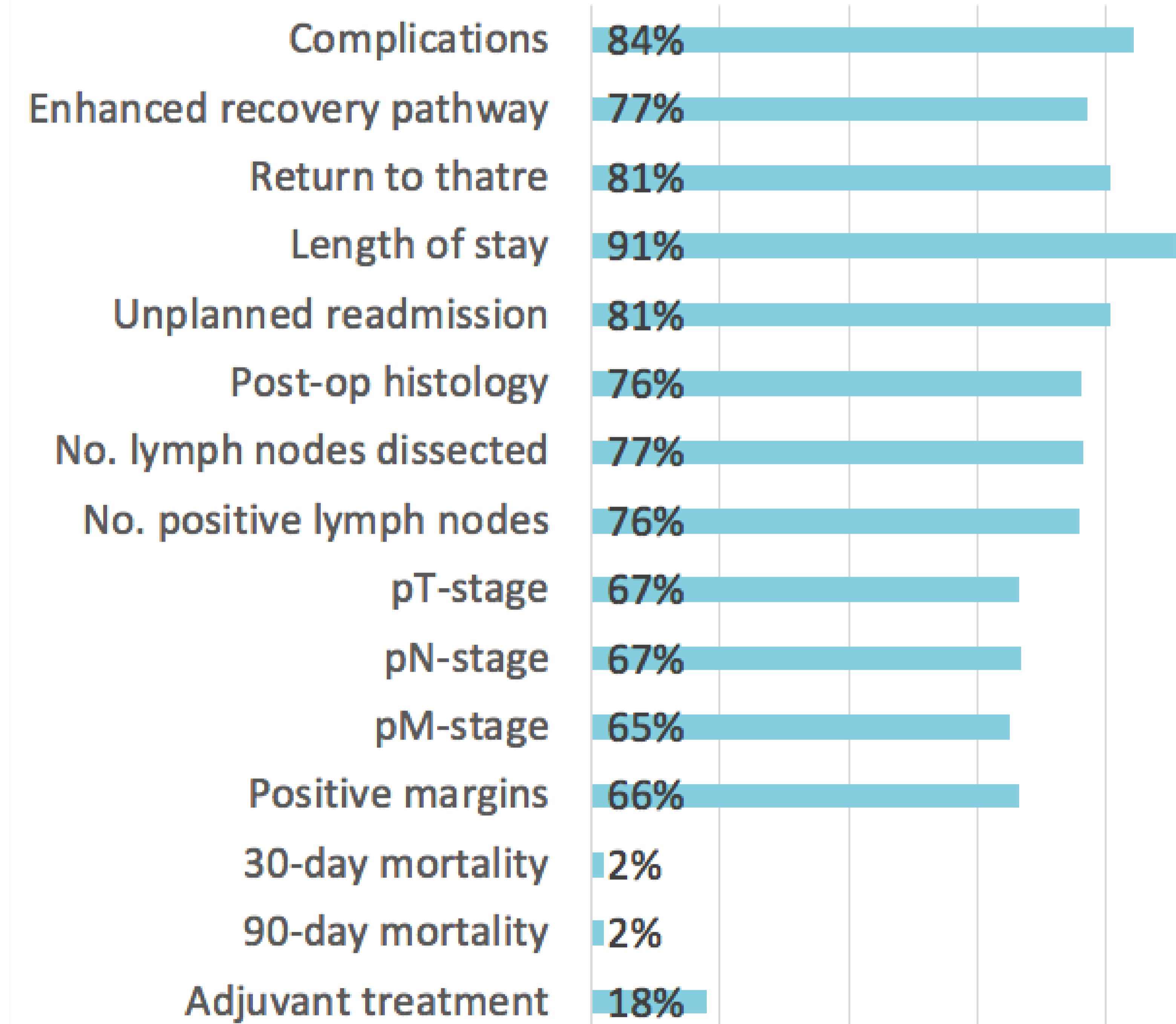


Fig 2b. % completion of data fields



PATIENT DESCRIPTION

- Median age 70 (IQR 62 – 75)

- 75% male   25% female

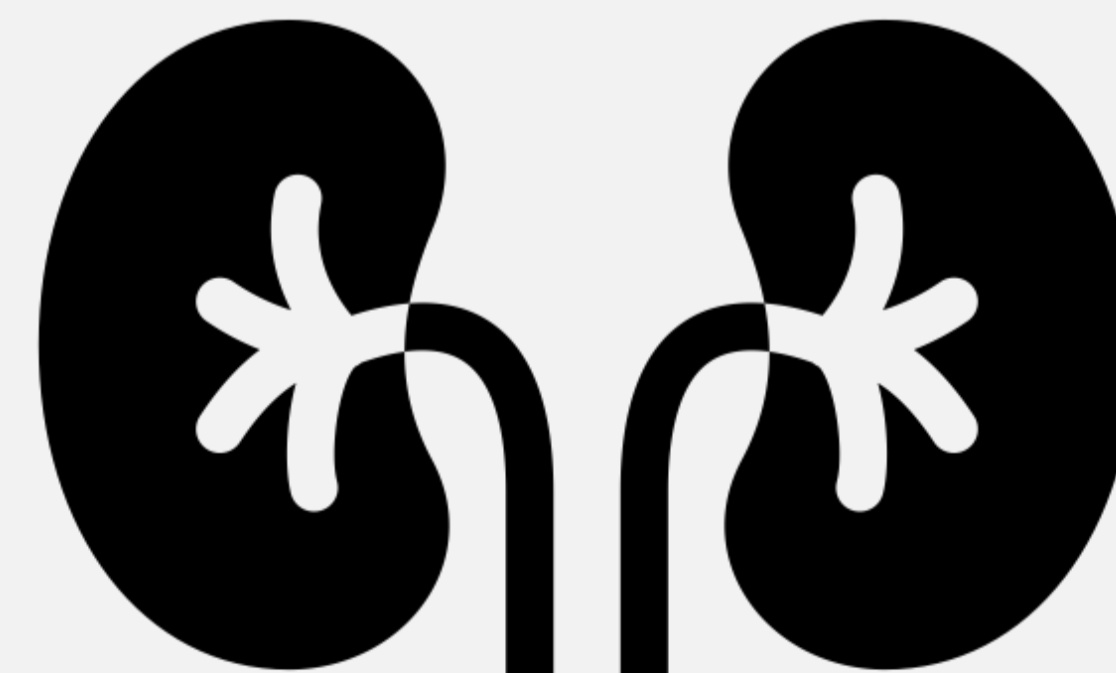
- Charlson Comorbidity Index (CCI) ≤ 2 in 66%

- BMI ≥ 30 in 20%



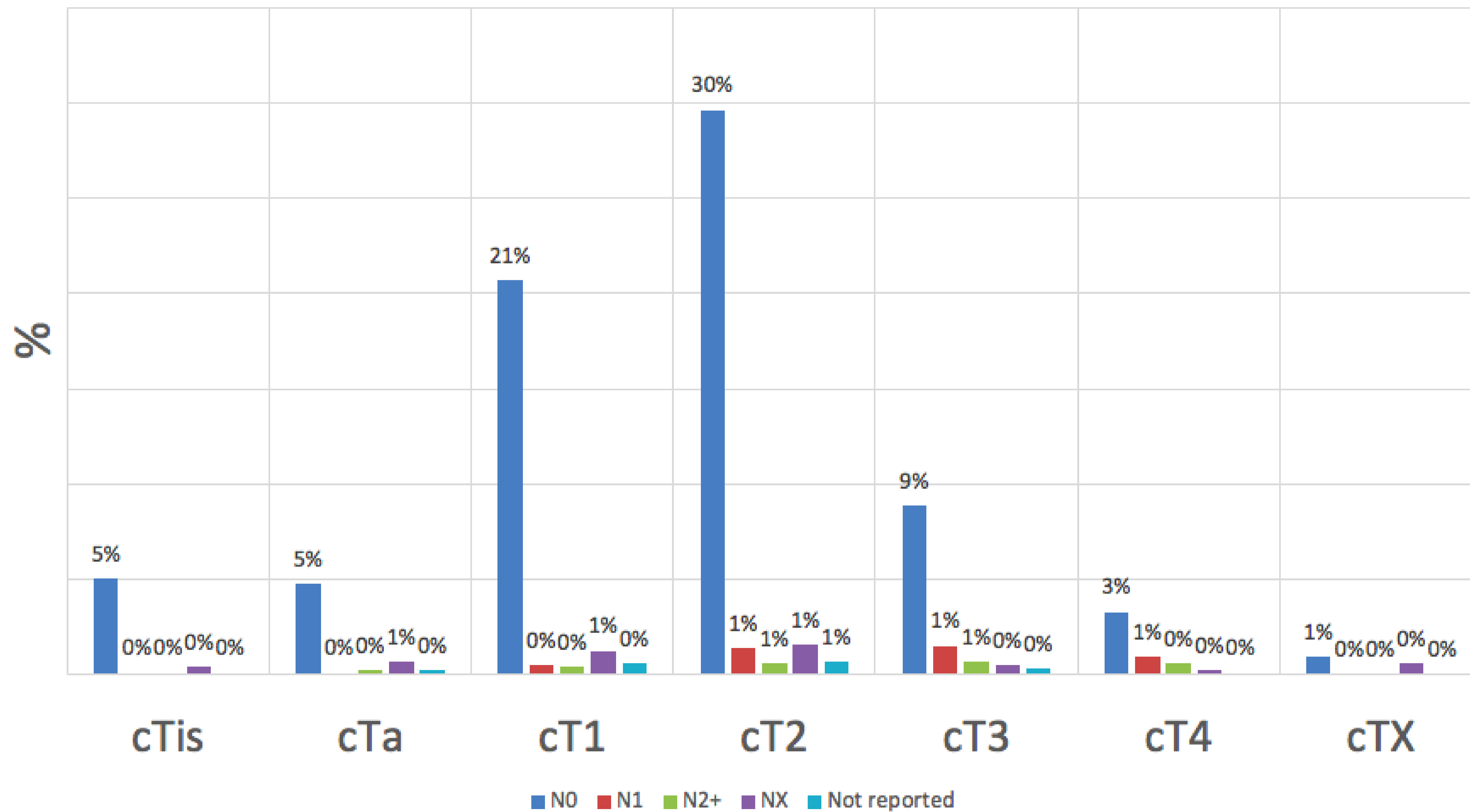
- Pre-op haemoglobin concentration < 120 : 34%

- Pre-op eGFR < 60 in 22%



DISEASE DESCRIPTION

Fig 3. Pre-op TN stage for all RC patients

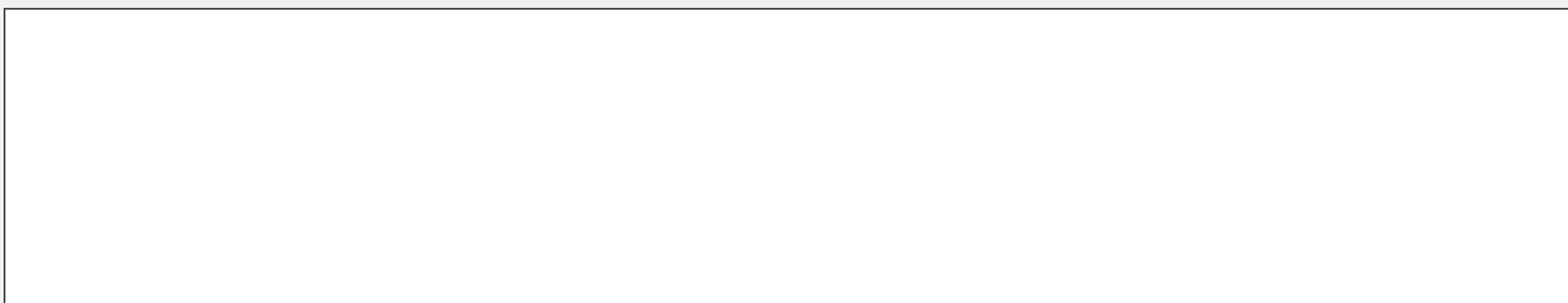


SURGICAL PRACTICE

Surgical modality	Robotic RC		Laparoscopic RC		Open RC	
	n	%	n	%	n	%
Total	2055	39%	279	5%	2830	54%
Centre median vol. (IQR)	20 (11 - 31)		2 (1 - 9)		18 (9 - 29)	
Surgeon median vol (IQR)	10 (3 - 17)		4 (1 - 7)		6 (3 - 12)	
Indication:						
NMIBC	812	40%	109	39%	859	30%
cT2	758	37%	103	37%	885	31%
≥cT3	224	11%	51	18%	576	20%

SURGICAL PRACTICE

Surgical modality	Robotic RC		Laparoscopic RC		Open RC	
	n	%	n	%	n	%
Urinary diversion:						
Ileal conduit	1739	85%	257	92%	2305	81%
Orthotopic	108	5%	14	5%	134	5%
Lymph node dissection	1665	81%	236	85%	1975	70%
Lymph node yield ≥ 16	622	30%	97	35%	751	27%
Transfused	75	4%	14	5%	464	16%
Enhanced recovery pathway	1411	69%	241	86%	1779	63%



Surgical modality	Robotic RC		Laparoscopic RC		Open RC	
	n	%	n	%	n	%
Median LOS (IQR)	7 (5 - 11)		10 (7 - 14)		10 (7 - 15)	
Positive surgical margins:						
Total NMIBC	45	6%	8	7%	55	6%
cT2	47	6%	11	11%	52	6%
cT3	13	8%	6	14%	36	9%
cT4	14	24%	2	25%	32	17%
Unplanned HDU admission	27	1.3%	11	3.9%	36	1.3%
Unplanned re-admission	197	9.6%	42	15%	262	9.3%
90-day mortality	37	1.8%	5	1.8%	60	2.1%

CONCLUSIONS

- Comprehensive and highly complete dataset.
- The first set of UK national urological standards.
- Procedure specific comparison.
- Service centralisation and technology adoption.
- Specific aspects of surgical practice observed.
- Public facing analysis of this dataset will enhance informed patient decision-making.

AUTHORS

Joseph John¹, John Pascoe¹, Sarah Fowler², Alexandra Colquhoun³,
Edward Rowe⁴, Benjamin Challacombe^{2,5} and John S McGrath^{1,2}

on behalf of the BAUS Section of Oncology.

¹Royal Devon and Exeter NHS Foundation Trust

²British Association of Urological Surgeons

³Cambridge University Hospitals NHS Foundation trust

⁴North Bristol NHS Trust

⁵Guy's and St Thomas' NHS Foundation Trust

GRAPHICS ACKNOWLEDGEMENTS

- bladder by priyanka from the Noun Project
- analyzing by Gem Designs from the Noun Project
- surgeon by Delwar Hossain from the Noun Project
- England by P Thanga Vignesh from the Noun Project
- body type by Rflor from the Noun Project
- Kidneys by Sergey Demushkin from the Noun Project
- male female by Arfan Khan Kamol from the Noun Project