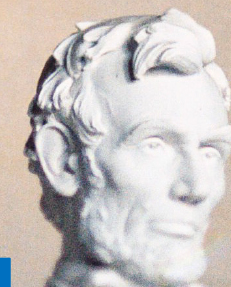


Predictive factors for recurrence after complete metastasectomy in patients with metastatic renal cell carcinoma in the targeted therapy era

Toshio Takagi¹, Hironori Fukuda¹, Hiroki Ishihara¹, Kazuhiko Yoshida¹,
Tsunenori Kondo², Hirohito Kobayashi¹, Junpei Iizuka¹, Masayoshi Okumi¹,
Hideki Ishida¹, Kenji Omae^{1,3}, and Kazunari Tanabe¹

¹Department of Urology, Tokyo Women's Medical University, Tokyo, Japan

²Department of Urology, Tokyo Women's Medical University Medical Center
East, Tokyo, Japan



Objective: **Complete metastasectomy** is expected to improve the survival of patients with metastatic renal cell carcinoma (**mRCC**). However, many patients develop re-recurrence, despite achieving complete remission with surgery. We examined recurrence-free survival (RFS) and analyzed predictive factors for recurrence after complete metastasectomy.

Patient selection

- Patients who underwent metastasectomy and achieved complete remission after surgery for mRCC at a single institution between 2008 and 2018.
- Patients who underwent nephrectomy or partial nephrectomy for primary lesion and were diagnosed as having RCC.

Exclusion

- Patients who received adjuvant systemic therapy after metastasectomy

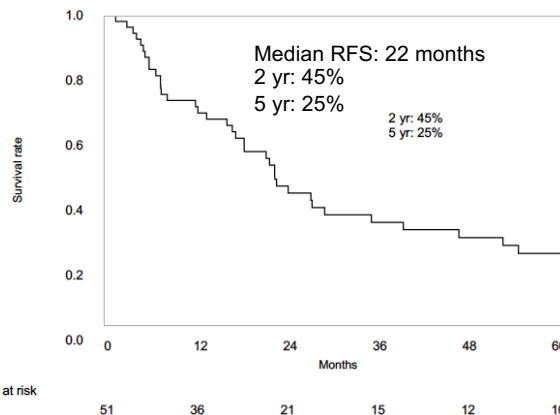
Number of patients, n		51
Age, years, median (IQR)		65 (57-71)
Subtype, n	Clear cell	42 (82%)
	Papillary	8 (17%)
	Others	1 (2%)
Sarcomatoid feature, n		2 (4%)
Metastasis at the time of nephrectomy, n		7 (14%)
Fuhrman grade, n	1	5 (10%)
	2	33 (65%)
	3	13 (25%)
	4	0
MSKCC risk, n	Favorable	22 (43%)
	Intermediate	27 (53%)
	Poor	2 (4%)
Number of metastatic sites, n	1	45 (88%)
	≥ 2	6 (12%)

Number: **39 Patients (76%)**

Median recurrence time: 18 months

Treatment after recurrence

- 17 cases(44%):metastasectomy
- 17 cases(44%):systemic therapy
- 5 cases (13%):palliative or observation



Variables		Univariate		Multivariate	
		HR (95%CI)	p	HR (95%CI)	p
Age	< 65 years	Reference			
	≥ 65 years	0.81 (0.42-1.57)	0.524		
Sex	female	Reference			
	Male	1.48 (0.68-3.69)	0.3389		
Subtype	Clear cell	Reference			
	Non-clear cell	1.86 (0.74-4.08)	0.1717		
Fuhrman grade	1	Reference			
	2	0.81 (0.21-2.78)	0.7074		
	3	0.83 (0.26-3.11)	0.757		
Sarcomatoid features	No	Reference		Reference	
	Yes	8.89 (1.35-34.7)	0.0275	11.5 (1.71-47.1)	0.0171
MSKCC risk	Favorable	Reference			
	Intermediate	0.90 (0.46-1.78)	0.7605		
	Poor	1.72 (0.27-6.19)	0.5031		
Time from initial therapy to metastasectomy	> 1year	Reference			
	≤ 1year	1.72 (0.69-3.76)	0.2223		
ECOG PS	0				
	1	0.91 (0.14-3.02)	0.8977		
Hb level	≥ Lower limit	Reference			
	< Lower limit	1.64 (0.84-3.15)	0.1423		
Metastatic organ	Lung only	reference			
	Others	1.34 (0.70-2.60)			
Metastatic sites	1	Reference		Reference	
	≥ 2	3.84 (1.08-10.8)	0.0388	4.52 (1.26-13.1)	0.024

Conclusion: The number of metastatic sites and sarcomatoid features were associated with recurrence after complete metastasectomy, which suggests that careful observation is required for such patients, even after achieving complete remission with metastasectomy.