

MP49-05

Pretreatment absolute monocyte count is a novel biomarker for predicting worse clinical outcome in chemo-resistant urothelial carcinoma patients treated with pembrolizumab

Koichiro Ogihara¹, Eiji Kikuchi², Takashi Okabe³, Seiya Hattori⁴, Ryo Yamashita⁵, Syunsuke Yoshimine⁶, Suguru Shirotake³, Kazuhiro Matsumoto¹, Ryuto Nakazawa², Ryuichi Mizuno¹, Satoshi Hara⁴, Masafumi Oyama³, Takeshi Masuda⁶, Masashi Niwakawa⁵, and Mototsugu Oya¹

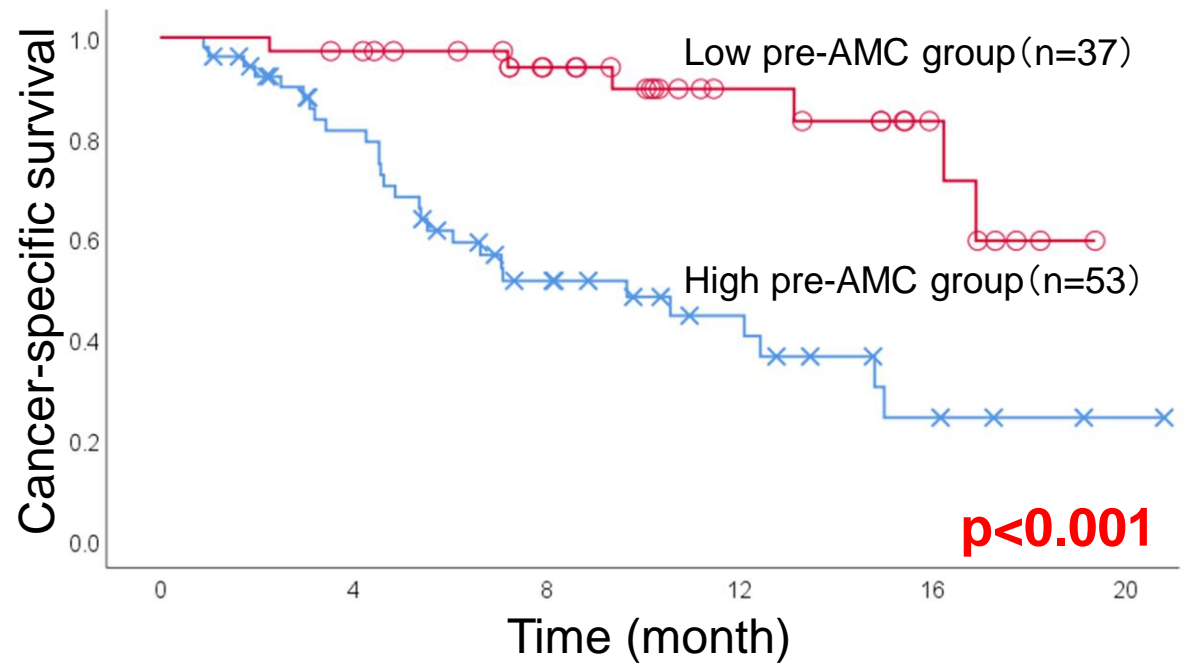
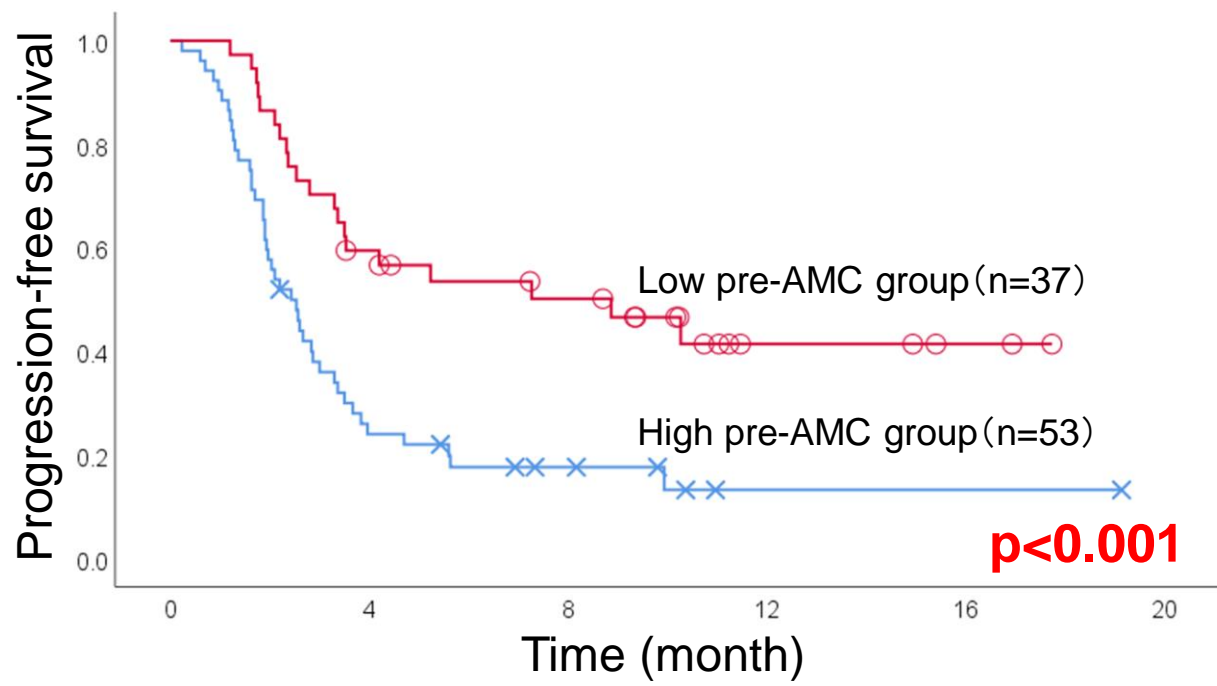
1: Dept. of Urology, Keio University School of Medicine 2: Dept. of Urology, St. Marianna University School of Medicine

3: Dept. of Uro-Oncology, Saitama Medical University International Medical Center 4: Dept. of Urology, Kawasaki Municipal Hospital

5: Dept. of Urology, Shizuoka Cancer Center 6: Dept. of Urology, Saitama City Hospital

- No. of patients: **90**
- We defined the elevated pretreatment absolute monocyte count (pre-AMC) as **>342**.
- Higher population of the high pre-AMC group was significantly administered salvage chemotherapy as compared to those of the low pre-AMC group.
- Pre-AMC in PD group was not significantly higher than that in CR · PR · SD group.

PFS and CSS according to pre-AMC



Cox regression analysis

	Progression			Cancer-specific death		
	Univariate p value	Multivariate HR (95% CI)	p value	Univariate p value	Multivariate HR (95% CI)	p value
Sex	0.499			0.065		
Male						
Female						
Age	0.535			0.437		
<70 years						
70 years≤						
Performance status	0.718			0.334		
0 or 1						
2						
Smoking history	0.215			0.728		
Yes						
No						
Primary lesion of the main tumor	0.959			0.051		
Upper tract						
Bladder						
Radical operation for primary tumor	0.795			0.286		
Yes						
No						
Liver metastases	0.01		0.028	0.67		
Yes		2.25 (1.16-4.38)				
No		1				
Adverse events (Grade 3 or 4)	0.166			0.1		
Yes						
No						
Number of chemotherapy	0.081			0.071		
≤5 courses						
6 courses≤						
Salvage chemotherapy	0.517			0.138		
Administered						
Not administered						
Pre-AMC	<0.001		0.007	<0.001		<0.001
<342		1			1	
342≤		2.38 (1.09-5.18)			8.4 (1.04-66.7)	