



MP57-19

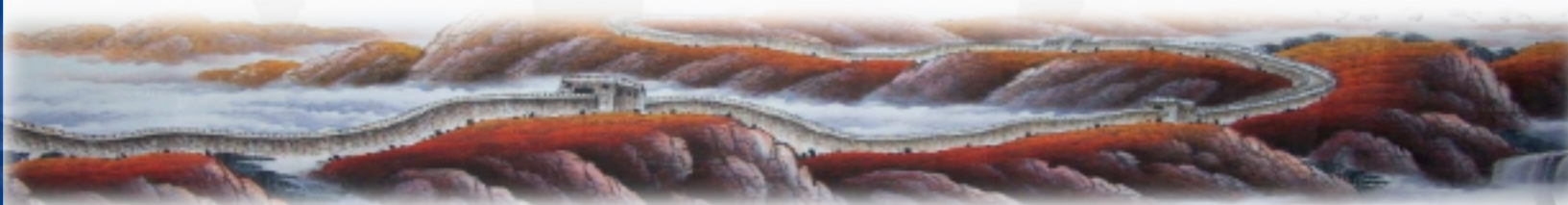


中国医学科学院肿瘤医院

Cancer Hospital Chinese Academy of Medical Sciences

The Evaluation of Cytoreductive Nephrectomy in Patients With Synchronous Metastatic Clear Cell Renal Cell Carcinoma from a Single Center in China: Role of Blood Immunoglobulins and PD-L1 and VEGFR-2 Protein Expression

Jianzhong Shou*, Weixing Jiang, Dong Wang, Xiaoqi Liu, Wei Zheng, Li Wen, Hongzhe Shi, Huijuan Zhang, Aiping Zhou, Changling Li, Jianhui Ma, Shan Zheng



Author affiliation: National Cancer Center/National Clinical Research Center for Cancer/Cancer Hospital, Chinese Academy of Medical Sciences and Peking Union Medical College

Presenting author: Jianzhong Shou

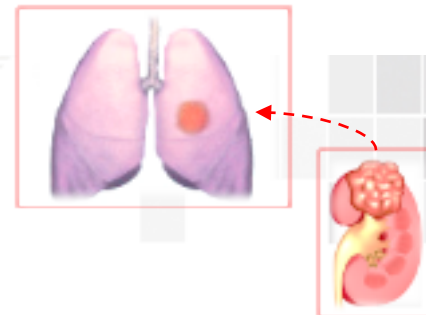
Vice chairman of Beijing professional committee of integrated Chinese and western medicine in urology

E-mail: shoujzh@126.com





Cytoreductive nephrectomy still needs further discussion in patients with intermediate-risk diseases



smRCC
a specific population in the intermediate- or poor-risk categories



PD-L1, target of immune checkpoint inhibitors



VEGFR-2, target of anti-angiogenesis



Molecular markers
have potential value of Screening for surgery

Patients with intermediate-risk diseases could be re-stratified by these two markers?





Correlation

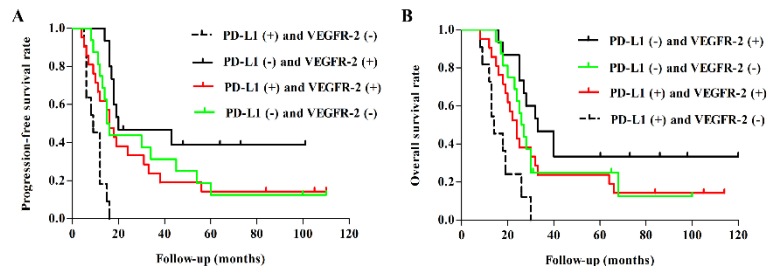
VEGFR-2 expression	PD-L1 expression (n)	
	Positive	Negative
Positive	23	22
Negative	15	35
P value	0.030	

Re-stratification

- ◆ PD-L1 (+) VEGFR-2 (+)
- ◆ PD-L1 (+) VEGFR-2 (-)
- ◆ PD-L1 (-) VEGFR-2 (+)
- ◆ PD-L1 (-) VEGFR-2 (-)

PD-L1-negative and VEGFR-2-positive patients with intermediate-risk disease undergoing cytoreductive nephrectomy is an appropriate approach

Survival difference



Unexpected interest

