

Do all patients who have prostate cancer with seminal vesicle invasion have poor prognosis?

Yoshinori Yanai, Takeo Kosaka, Hiroshi Hongo, Yota Yasumizu, Nobuyuki Tanaka, Toshikazu Takeda, Kazuhiro Matsumoto, Shinya Morita, Ryuichi Mizuno, Mototsugu Oya

Department of Urology, Keio University School of Medicine

Conflict of Interest Disclosure

**I have no potential conflict of
interest to report**

Background & Materials

Postoperative adjuvant radiation therapy (RTx) after radical prostatectomy (RP) is usually recommended in patients with seminal vesicle invasion (SVI).

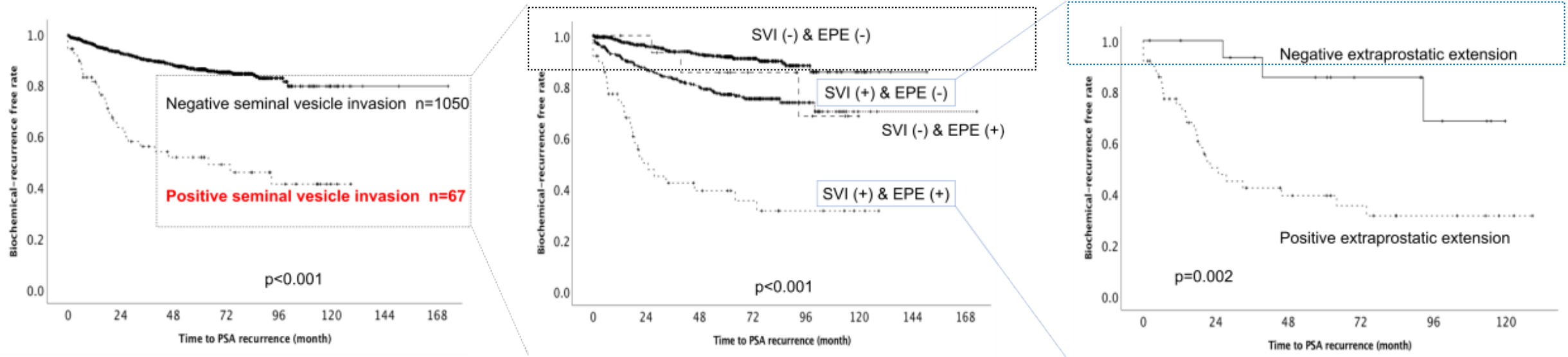
However, the optimal timing of postoperative RTx is unclear and controversial.

Patients

We retrospectively reviewed the clinicopathological data of 1240 consecutive patients who underwent RP between 2005 and 2018. Patients receiving adjuvant therapy were excluded.

Methods

Multiple variables were evaluated as the predictors for the biochemical recurrence (BCR) after RP.



| | PSA recurrence | | Univariate p-value | Multivariate | |
|--------------------------|----------------|-----|--------------------|------------------------|---------|
| | No | Yes | | HR (95% CI) | p-value |
| Age (yr) | | | 0.115 | | |
| <66 | 16 | 8 | | | |
| ≥66 | 20 | 23 | | | |
| PSA (ng/ml) | | | 0.007 | 5.065 (1.838 - 13.958) | 0.002 |
| <10 | 27 | 11 | | | |
| 10-20 | 7 | 13 | | | |
| >20 | 2 | 6 | | | |
| clinical T stage | | | 0.676 | | |
| cT1c, 2a, 2b | 24 | 22 | | | |
| cT2c, 3a | 11 | 8 | | | |
| Grade Group | | | 0.215 | | |
| 1, 2 | 9 | 4 | | | |
| 3, 4, 5 | 27 | 27 | | | |
| Extraprostatic extension | | | 0.007 | 5.311 (1.089 - 25.904) | 0.039 |
| No | 14 | 3 | | | |
| Yes | 22 | 28 | | | |
| Positive surgical margin | | | 0.100 | | |
| No | 15 | 7 | | | |
| Yes | 21 | 24 | | | |

Conclusions

In cases with SVI, EPE-free showed a favorable prognosis. Adjuvant therapy after prostatectomy may not be necessary in these patients.