



THE UNIVERSITY OF
SYDNEY



Identifying the pathological predictors of PSMA avidity

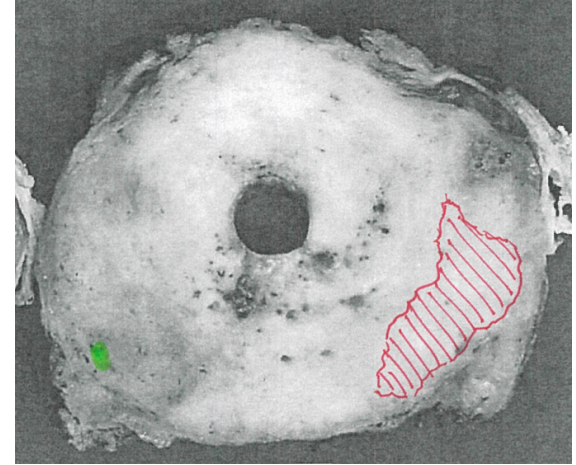
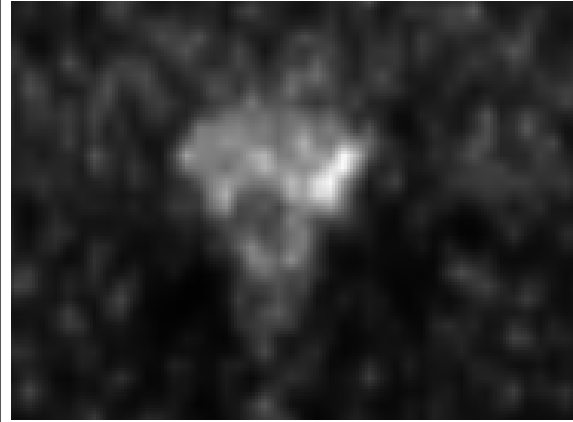
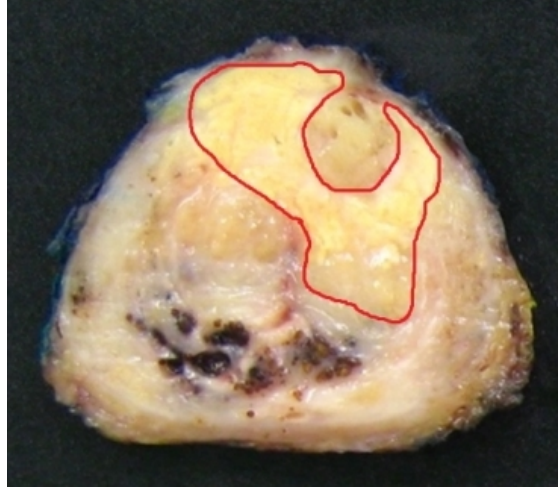
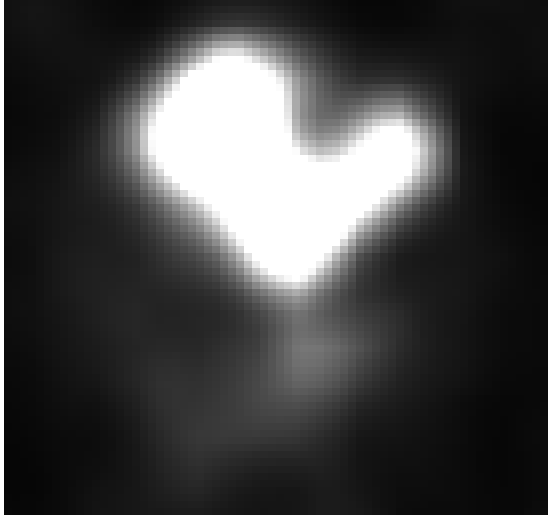
Comparison of preoperative locoregional Ga-68 PSMA PET-CT results with radical prostatectomy histopathology

**Kam J^{1,3}, Gore N¹, Lai B¹, Fernando H¹, Boulas J^{1,3}, Eisinger D^{1,3}, Sved P^{1,3}, Vasilaras A^{1,3},
Watson G^{1,2}, Leslie S^{1,3}**

¹ Department of Urology, Royal Prince Alfred Hospital, NSW, Australia

² Department of Pathology, Royal Prince Alfred Hospital, NSW, Australia

³ Sydney Medical School, University of Sydney



Methods

Results

- Predictors of detection on PSMA PET/CT were:
 - - Index lesion (100% vs. 12%), $p < 0.001$
 - ISUP score 2 or greater, $p < 0.001$
 - Tumor maximum dimension: 21.5mm vs. 5.4 mm (detected vs. undetected lesions), $p < 0.0001$
 - Tumor volume: 3.2cc vs. 0.18cc (detected vs. undetected lesions), $p < 0.001$

