



American
Urological
Association

Education & Research, Inc.

AUA VIRTUAL EXPERIENCE

MP67-13



Comparison of morbidity between limited and extended pelvic lymph node dissection for prostate cancer: results from a large, clinically-integrated, randomized trial

Karim A. Touijer¹; Daniel D. Sjoberg²; Nicole Benfante¹; Claudia Mercader³; Natalia Picola⁴; Inés Rivero⁵;
Vincent Landone¹; Behfar Ehdaie¹; James A Eastham¹; Peter T. Scardino¹; Andrew Vickers²

¹Memorial Sloan Kettering Cancer Center, Urology Service, Department of Surgery, New York, USA; ²Memorial Sloan Kettering Cancer Center, Department of Epidemiology & Biostatistics, New York, USA;

³Clinic Hospital of Barcelona, Urology, Barcelona, Spain; ⁴Bellvitge University Hospital, Dept. of Urology, Barcelona, Spain; ⁵Virgen del Rocio, Dept. of Uro- Nephrology, Seville, Spain

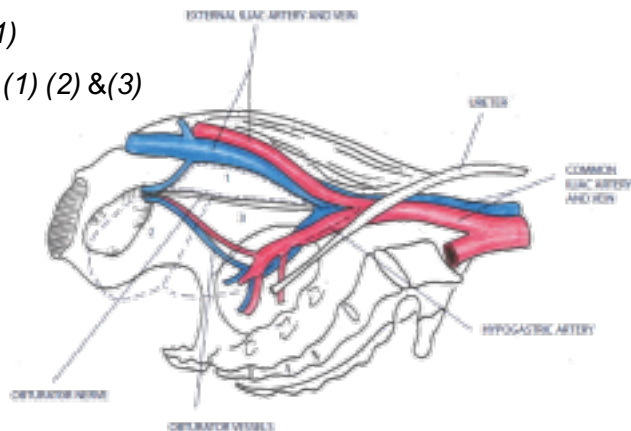


MATERIAL AND METHODS

- ✓ **Type of study:** Clinically integrated randomized trial
- ✓ **Study period:** October 2011 and March 2017
- ✓ **Randomization:** surgeon-level cluster crossover randomization
- ✓ **Intervention:** Pelvic lymph node dissection (PLND)

Limited: (1)

Extended: (1) (2) & (3)



- ✓ **Endpoint:** Complications at 30 days.

RESULTS

Final arms:

- Limited PLND : 723; (49%)
- Extended PLND: 757; (51%)

Table 1: Complication grade within 30 days of surgery

Complication Grade	Limited PLND	Extended PLND
None	647 (89%)	692 (91%)
1	24 (3.3%)	17 (2.2%)
2	27 (3.7%)	25 (3.3%)
3	25 (3.5%)	23 (3.0%)
≥ 2	52 (7.2%)	48 (6.3%)



Table 2 : List of complications within 30 days of surgery

Complication	Limited PLND			Extended PLND		
	Grade 1	Grade 2	Grade 3	Grade 1	Grade 2	Grade 3
Angina or cardiac arrest	0	1	0	0	2	0
Supraventricular Arrhythmia	1	2	0	0	0	0
Ventricular Arrhythmia	1	0	0	0	0	0
Deep Venous Thrombosis	0	4	0	1	2	0
Pulmonary Embolus	0	2	1	0	5	0
Hemorrhage	4	13	4	0	7	4
Hypotension or Shock	0	0	0	0	1	0
Paralytic Ileus	0	2	0	2	3	0
Small Bowel Obstruction	0	1	1	0	0	0
Wound Infection	1	1	0	4	4	0
Intra-abdominal infection	0	0	5	0	0	8
Lymphocele or Chylous Ascites	1	1	5	0	0	1
Anastomotic Leak	4	1	5	4	0	7
Ureteral Injury	0	0	1	0	0	2
Motor Neuropathy	1	0	0	0	0	0
Sensory Neuropathy	1	0	0	0	0	0
Gastrointestinal Injury	0	0	0	0	1	0

CONCLUSION

In this large randomized trial the overall rate of grade II and III complications was low. There was no significant difference in complication rates between the limited and extended PLND.