

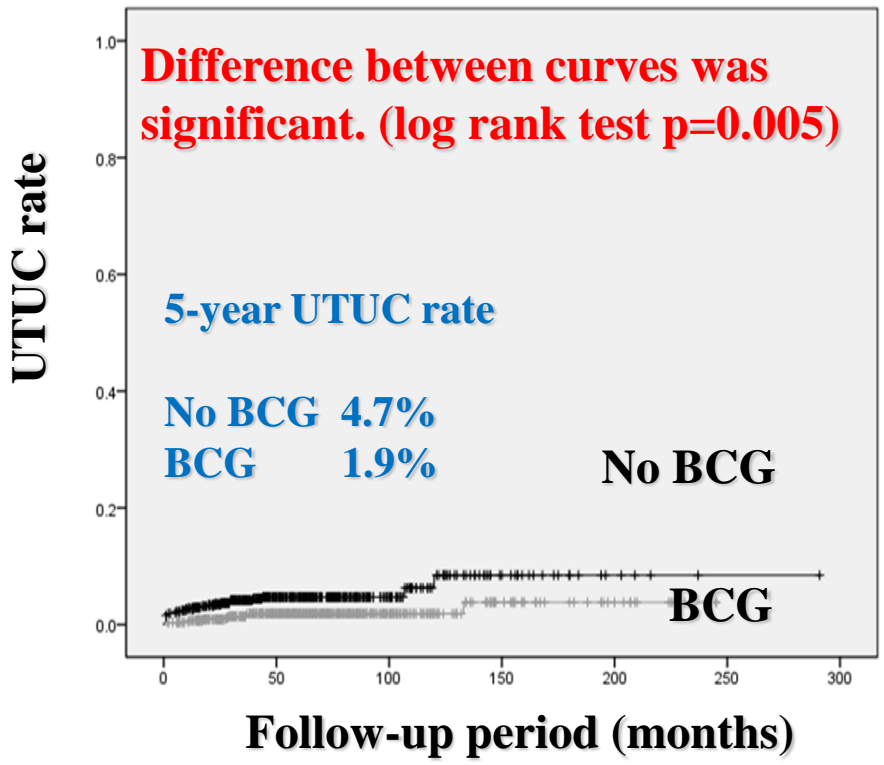
INTRAVESICAL BCG INSTILLATION IS STRONGLY ASSOCIATED WITH A DECREASED RISK OF UPPER TRACT UROTHELIAL CARCINOMA RECURRENCE AS WELL AS INTRAVESICAL RECURRENCE IN ELDERLY MALE PATIENTS WITH PATIENTS WITH NON-MUSCLE INVASIVE BLADDER CANCER

MP 82-18

Patients characteristics according to the experience of BCG

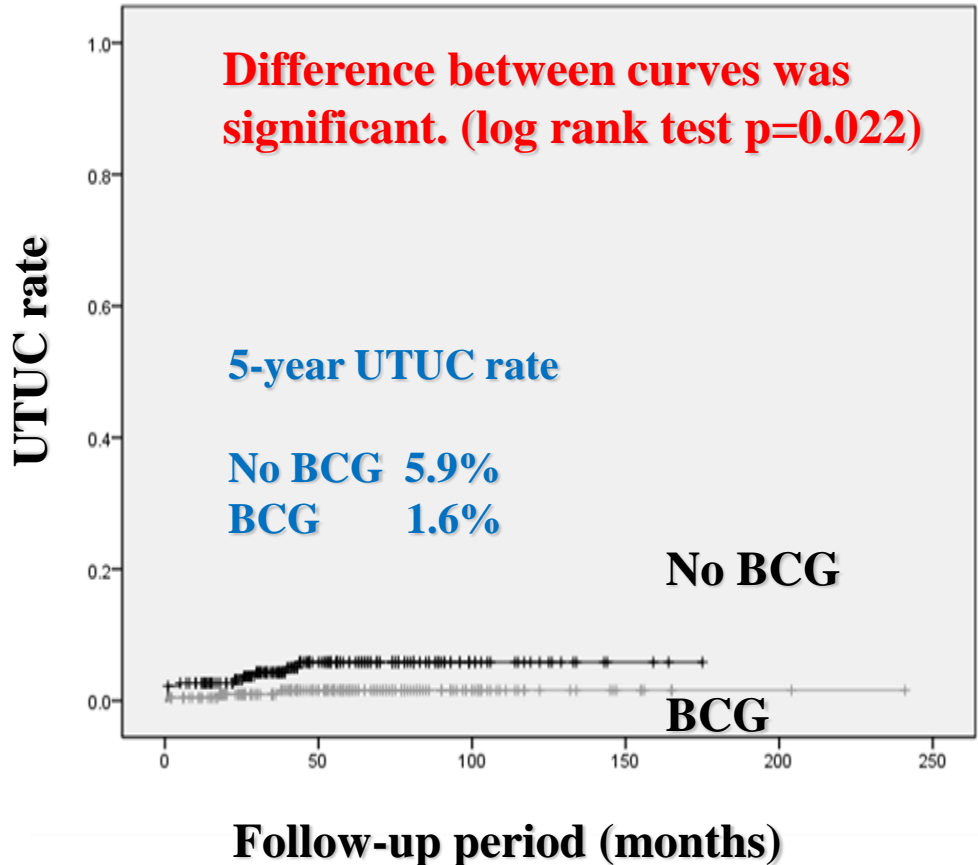
Characteristics		Pts with BCG	Pts without BCG	P value
Age	<70	295	287	0.144
	≥70	253	293	
Gender	Male	471	457	0.002
	Female	77	123	
Grade	Low	235	464	<0.001
	High	313	116	
pT	Ta	305	467	<0.001
	T1	243	113	
Multiple	Yes	349	203	<0.001
	No	199	377	
CIS	Yes	115	14	<0.001
	No	433	566	

Kaplan Meier curves of UTUC rates in NMIBC patients with and without BCG



**Kaplan Meier curves of UTUC rates
 in NMIBC elderly male patients with and without BCG**

**Univariate and Multivariate analysis
 for UTUC in NMIBC patients**



	Univariate <i>P</i> value	Multivariate		
		Hazards Ratio	95% CI	<i>P</i> value
Age(≥70 vs <70)	0.330			
Gender	0.498			
Grade (G1,2 vs G3)	0.272			
T stage (T1 vs Ta)	0.892			
Multiple	0.091			
Concomitant CIS	0.651			
Chemotherapy	0.184			
BCG	0.005	0.260	0.119-0.566	0.001